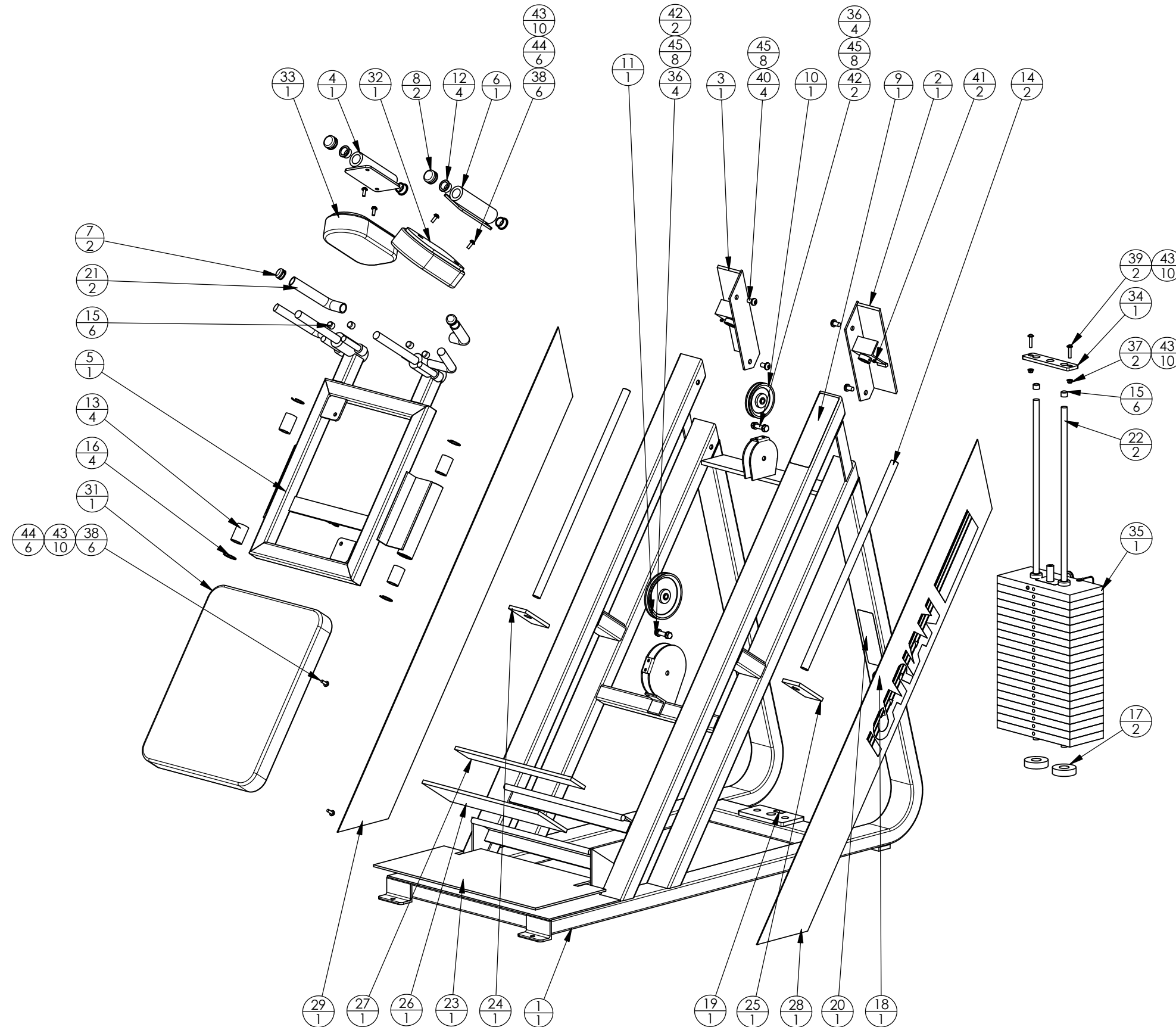


REVISIONS				
REV	ECN #	DESCRIPTION	REV. BY/DATE	APR. BY
A	-----	INITIAL RELEASE	04/2000	



ITEM NO.	QTY.	PART NO.	DESCRIPTION
1	1	612-SA-1	612 MAIN FRAME
2	1	612-SA-2	612 LINEAR SHAFT SUPPORT ASSY, RIGHT
3	1	612-SA-3	612 LINEAR SHAFT SUPPORT ASSY, LEFT
4	1	612-SA-4	612 SHOULDER PAD SUPPORT, LEFT
5	1	612-SA-5	612 CARRIAGE
6	1	612-SA-6	612 SHOULDER PAD SUPPORT, RIGHT
7	2	AC218	HANDLE END CAP W/SET SCREWS, DIA 1"
8	2	AC222	SHAFT END CAP W/SET SCREWS, DIA 1"
9	1	AC0612B	LABEL, INSTRUCTION, "ANGLED STANDING CALF 612"
10	1	AC1009	PULLEY, 4 1/2" DIA x 1/2" ID
11	1	AC1010	PULLEY, 6" DIA x 1/2" ID
12	4	AC1021	BUSHING, BRONZE, 1.020" ID x 1 1/4" OD
13	4	AC1028	LINEAR BEARING, SUPER 16
14	2	AC1035	SHAFT, CASE HARDENED, DIA 1 x (29)
15	6	AC1040	CAP, GUIDE ROD, DIA. 3/4
16	4	AC1121	SNAP RING RETAINER, (SUPER 16)
17	2	AC1148	WEIGHT STACK BUMPER
18	1	AC1161	LABEL, ROUND, "MADE IN USA"
19	1	AC1164	LABEL, F.P.I. SERIAL NUMBER
20	1	AC1183	LABEL, "WARNING, SERIOUS INJURY..."
21	2	AC1226-6	RUBBERGRIP, DIA 1 x (8 1/4)
22	2	CH1213	STEEL BAR RND, DIA. 3/4" x (44 5/8)
23	1	CP1003	CUT PIECE CREPE, 1/4 x 15 x 29
24	1	CP1051 (L)	CUT PIECE CREPE, 7/16 x 3 x 5, 1 HOLE (L)
25	1	CP1051 (R)	CUT PIECE CREPE, 7/16 x 3 x 5, 1 HOLE (R)
26	1	CP1025	CUT PIECE CREPE, 7/16 x 6 1/8 x 20 3/4
27	1	CP1026	CUT PIECE CREPE, 7/16 x 3 x 20 3/4
28	1	CP1137 (R)	ABS BLACK, 1/8 x 7 1/2 x 70 11/16, RIGHT, WITH LOGO
29	1	CP1137 (L)	ABS BLACK, 1/8 x 7 1/2 x 70 11/16, LEFT WITH LOGO
30	1	GH-612-79-250	CABLE ASSY, GH-612-79-250
31	1	PD1130	PAD, 20 x 24 1/2, 2 HOLES
32	1	PD1303-LEFT	PAD, 6 x 10 3/4, LEFT 2 HOLES
33	1	PD1303-RIGHT	PAD, 6 x 10 3/4, RIGHT 2 HOLES
34	1	PF1016	STEEL BAR FLAT CR/HR, 3/8 x 2 x (8 1/4)
35	1	WS4000	WEIGHT STACK, 20 PLATE, 400 LBS.
36	4	FA1035	NUT, HEX, ACORN, 1/2-13
37	2	FA1042	NUT, HEX, LOW PROFILE, NYLOCK, 5/16-18
38	6	FA1071	BOLT, BUTTON HEAD, 5/16-18 x 1
39	2	FA1072	BOLT, BUTTON HEAD, 5/16-18 x 1 1/2
40	4	FA1075	BOLT, BUTTON HEAD, 1/2-13 x 1
41	2	FA1081	SCREW, SET, SCKT, CUP POINT, 5/16-18 x 5/16
42	2	FA1101	STUD, 1/2-13 x 2 1/2
43	10	FA1106	WASHER, FLAT, 5/16 ID x 11/16 OD
44	6	FA1116	WASHER, SPLIT, 5/16 ID
45	8	FA1119	WASHER, SPLIT, 1/2 ID

WEIGHT: 845 LBS.

UNLESS OTHERWISE SPECIFIED DIMENSIONS ARE IN INCHES		<b>FITNESS PRODUCTS INTERNATIONAL</b> ICARIAN FLITE ABENCH JADE STRETCH CENTER 12660 BRANFORD ST. SUN VALLEY, CA. 91352		APPROVALS DESIGNED BY: KLS 03/94 MODELED BY: VLE 12/99 DRAWN BY: RJB 04/00 APPROVED BY:	DATE 03/94 12/99 04/00	TITLE <b>ANGLED STANDING CALF</b>	SCALE <b>1:14</b>
TOLERANCES ARE: FRACTIONS ± 1/32 DECIMALS .XX± .01 .XXX± .005 ANGLES ± 1°							
THIRD ANGLE PROJECTION				SIZE <b>B</b>		DWG. NO. <b>612-EXP</b>	REV <b>A</b>
DO NOT SCALE DRAWING							

**612 Angled Standing Calf**

<b>Part Number</b>	<b>Description</b>	<b>Bubble Number</b>
CW612SA1-211	ASSY,FRAME,MAIN,612,SKY WHITE	1.01
CW612SA1-221	ASSY,FRAME,MAIN,612,BLACK	1.02
CW612SA1-231	ASSY,FRAME,MAIN,612,RED	1.03
CW612SA1-241	ASSY,FRAME,MAIN,612,PLAT SPRKLE	1.04
CW612SA1-251	ASSY,FRAME,MAIN,612,SILVER	1.05
CW612SA1-261	ASSY,FRAME,MAIN,612,BLUE	1.06
CW612SA1-271	ASSY,FRAME,MAIN,612,CHARCOAL	1.07
CW612SA1-281	ASSY,FRAME,MAIN,612,CATH GRAY	1.08
CW612SA1-291	ASSY,FRAME,MAIN,612,SILVER VIEN	1.09
CW612SA1-311	ASSY,FRAME,MAIN,612,STONE HG	1.11
CW612SA1-321	ASSY,FRAME,MAIN,612,TITANIUM HG	1.12
CW612SA1-331	ASSY,FRAME,MAIN,612,WHITE GLOSS	1.13
CW612SA1-341	ASSY,FRAME,MAIN,612,BLACK ONYX	1.14
CW612SA1-351	ASSY,FRAME,MAIN,612,LT. BRONZE	1.15
CW612SA1-361	ASSY,FRAME,MAIN,612,SAPPHIRE BL	1.16
CW612SA2-211	ASSY,LINEAR SHAFT SUPPORT,RIGHT,612	2.01
CW612SA2-221	ASSY,LINEAR SHAFT SUPPORT,RIGHT,612	2.02
CW612SA2-231	ASSY,LINEAR SHAFT SUPPORT,RIGHT,612	2.03
CW612SA2-241	ASSY,LINEAR SHAFT SUPPORT,RIGHT,612	2.04
CW612SA2-251	ASSY,LINEAR SHAFT SUPPORT,RIGHT,612	2.05
CW612SA2-261	ASSY,LINEAR SHAFT SUPPORT,RIGHT,612	2.06
CW612SA2-271	ASSY,LINEAR SHAFT SUPPORT,RIGHT,612	2.07
CW612SA2-281	ASSY,LINEAR SHAFT SUPPORT,RIGHT,612	2.08
CW612SA2-291	ASSY,LINEAR SHAFT SUPPORT,RIGHT,612	2.09
CW612SA2-311	ASSY,LINEAR SHAFT SUPPORT,RIGHT,612	2.11
CW612SA2-321	ASSY,LINEAR SHAFT SUPPORT,RIGHT,612	2.12
CW612SA2-331	ASSY,LINEAR SHAFT SUPPORT,RIGHT,612	2.13
CW612SA2-341	ASSY,LINEAR SHAFT SUPPORT,RIGHT,612	2.14
CW612SA2-351	ASSY,LINEAR SHAFT SUPPORT,RIGHT,612	2.15
CW612SA2-361	ASSY,LINEAR SHAFT SUPPORT,RIGHT,612	2.16
CW612SA3-211	ASSY,LINEAR SUPPORT,LEFT,612,SKY WH	3.01
CW612SA3-221	ASSY,LINEAR SUPPORT,LEFT,612,BLACK	3.02
CW612SA3-231	ASSY,LINEAR SUPPORT,LEFT,612,RED	3.03
CW612SA3-241	ASSY,LINEAR SUPPORT,LEFT,612,PLATIN	3.04
CW612SA3-251	ASSY,LINEAR SUPPORT,LEFT,612,SILVER	3.05
CW612SA3-261	ASSY,LINEAR SUPPORT,LEFT,612,BLUE	3.06
CW612SA3-271	ASSY,LINEAR SUPPORT,LEFT,612,CHARCO	3.07
CW612SA3-281	ASSY,LINEAR SUPPORT,LEFT,612,CATHED	3.08
CW612SA3-291	ASSY,LINEAR SUPPORT,LEFT,612,SILVER	3.09
CW612SA3-311	ASSY,LINEAR SUPPORT,LEFT,612,STONE	3.11
CW612SA3-321	ASSY,LINEAR SUPPORT,LEFT,612, TITAN	3.12
CW612SA3-331	ASSY,LINEAR SUPPORT,LEFT,612, WHITE	3.13
CW612SA3-341	ASSY,LINEAR SUPPORT,LEFT,612, BLACK	3.14
CW612SA3-351	ASSY,LINEAR SUPPORT,LEFT,612, LIGHT	3.15
CW612SA3-361	ASSY,LINEAR SUPPORT,LEFT,612, SAPPH	3.16
CW612SA4-211	ASSY,SHOULDER PAD SUPPORT,LEFT,612,	4.01
CW612SA4-221	ASSY,SHOULDER PAD SUPPORT,LEFT,612,	4.02
CW612SA4-231	ASSY,SHOULDER PAD SUPPORT,LEFT,612,	4.03
CW612SA4-241	ASSY,SHOULDER PAD SUPPORT,LEFT,612,	4.04
CW612SA4-251	ASSY,SHOULDER PAD SUPPORT,LEFT,612,	4.05

CW612SA4-261	ASSY, SHOULDER PAD SUPPORT, LEFT, 612,	4.06
CW612SA4-271	ASSY, SHOULDER PAD SUPPORT, LEFT, 612,	4.07
CW612SA4-281	ASSY, SHOULDER PAD SUPPORT, LEFT, 612,	4.08
CW612SA4-291	ASSY, SHOULDER PAD SUPPORT, LEFT, 612,	4.09
CW612SA4-311	ASSY, SHOULDER PAD SUPPORT, LEFT, 612,	4.11
CW612SA4-321	ASSY, SHOULDER PAD SUPPORT, LEFT, 612,	4.12
CW612SA4-331	ASSY, SHOULDER PAD SUPPORT, LEFT, 612,	4.13
CW612SA4-341	ASSY, SHOULDER PAD SUPPORT, LEFT, 612,	4.14
CW612SA4-351	ASSY, SHOULDER PAD SUPPORT, LEFT, 612,	4.15
CW612SA4-361	ASSY, SHOULDER PAD SUPPORT, LEFT, 612,	4.16
CW612SA5-211	ASSY, CARRIAGE, 612, SKY WHITE	5.01
CW612SA5-221	ASSY, CARRIAGE, 612, BLACK	5.02
CW612SA5-231	ASSY, CARRIAGE, 612, RED	5.03
CW612SA5-241	ASSY, CARRIAGE, 612, PLATINUM SPRKL	5.04
CW612SA5-251	ASSY, CARRIAGE, 612, SILVER	5.05
CW612SA5-261	ASSY, CARRIAGE, 612, BLUE	5.06
CW612SA5-271	ASSY, CARRIAGE, 612, CHARCOAL	5.07
CW612SA5-281	ASSY, CARRIAGE, 612, CATH GRY	5.08
CW612SA5-291	ASSY, CARRIAGE, 612, SILVER VIEN	5.09
CW612SA5-311	ASSY, CARRIAGE, 612, STONE HG	5.11
CW612SA5-321	ASSY, CARRIAGE, 612, TITANIUM HG	5.12
CW612SA5-331	ASSY, CARRIAGE, 612, WHITE GLOSS	5.13
CW612SA5-341	ASSY, CARRIAGE, 612, BLACK ONYX	5.14
CW612SA5-351	ASSY, CARRIAGE, 612, LIGHT BRONZE	5.15
CW612SA5-361	ASSY, CARRIAGE, 612, SAPPHIRE BLUE	5.16
CW612SA6-211	ASSY, SHOULDER PAD SUPPORT, RIGHT, 612	6.01
CW612SA6-221	ASSY, SHOULDER PAD SUPPORT, RIGHT, 612	6.02
CW612SA6-231	ASSY, SHOULDER PAD SUPPORT, RED	6.03
CW612SA6-241	ASSY, SHOULDER PAD SUPPORT, RIGHT, 612	6.04
CW612SA6-251	ASSY, SHOULDER PAD SUPPORT, RIGHT, 612	6.05
CW612SA6-261	ASSY, SHOULDER PAD SUPPORT, RIGHT, 612	6.06
CW612SA6-271	ASSY, SHOULDER PAD SUPPORT, RIGHT, 612	6.07
CW612SA6-281	ASSY, SHOULDER PAD SUPPORT, RIGHT, 612	6.08
CW612SA6-291	ASSY, SHOULDER PAD SUPPORT, RIGHT, 612	6.09
CW612SA6-311	ASSY, SHOULDER PAD SUPPORT, RIGHT, 612	6.11
CW612SA6-321	ASSY, SHOULDER PAD SUPPORT, RIGHT, 612	6.12
CW612SA6-331	ASSY, SHOULDER PAD SUPPORT, RIGHT, 612	6.13
CW612SA6-341	ASSY, SHOULDER PAD SUPPORT, RIGHT, 612	6.14
CW612SA6-351	ASSY, SHOULDER PAD SUPPORT, RIGHT, 612	6.15
CW612SA6-361	ASSY, SHOULDER PAD SUPPORT, RIGHT, 612	6.16
CWAC218-901	HANDLE END CAP W/SET SCREWS, DIA 1"	7
CWAC222-901	ASSY, SHAFT END CAP W/SET SCREWS, D	8
CWAC1009-101	PULLEY, 4 1/2 DIA. X 1/2 ID	10
CWAC1010-101	PULLEY, 6 DIA X 1/2 ID	11
CW12571-101	LINEAR BEARING, CLOSED TYPE, 1.000/	13
CWPF3502-901	GUIDE ROD, STEEL, OD 1.0 X 29.0 CASE	14
CW12404-101	CAP, GUIDE ROD, DIA 3/4, BLK	15
CWACHN125-006	SNAP RING RETAINER, (SUPER 16)	16
CW12402-101	BUMPER, WEIGHT STACK, BLK RUBBER	17
CWGR2608-125	GRIP, RUBBER, 1" DIA X 8 1/4"	21
CWPF1213-711	GUIDE ROD, STEEL, CHM, OD 3/4 X 44 5/8	22
CW30013-125	CUT PIECE, CREPE, 1/4 X 15 X 29	23

CWCP1051-101	CUT PIECE, CREPE, 7/16 X 3 X 5, 1 H	24
CWCP1051-102	CUT PIECE, CREPE, 7/16 X 3 X 5, 1 H	25
CW30014-122	CUT PIECE, CREPE, 7/16 X 6 1/8 X 20	26
CW30014-110	CUT PIECE, CREPE, 7/16 X 3 X 20 3/4	27
CWCP1137-102	CUT PIECE, ABS BLACK, 1/8 X 7 1/2 X	28
CWCP1137-101	CUT PIECE, ABS BLACK, 1/8 X 7 1/2 X	29
CWCLGH079-250	ASSY, CABLE, 612	30
CWPD1130B-101	PAD,20X24.5,2HOLES,W/BP,BLACK	31.01
CWPD1130B-102	PAD,20X24.5,2HOLES,W/BP,RYL BL	31.02
CWPD1130B-103	PAD,20X24.5,2HOLES,W/BP,DVE GRY	31.03
CWPD1130B-104	PAD,20X24.5,2HOLES,W/BP,CROCUS	31.04
CWPD1130B-105	PAD,20X24.5,2HOLES,W/BP,GROTTO	31.05
CWPD1130B-106	PAD,20X24.5,2HOLES,W/BP,GRAPHITE	31.06
CWPD1130B-107	PAD,20X24.5,2HOLES,W/BP,RED	31.07
CWPD1130B-108	PAD,20X24.5,2HOLES,W/BP,CHN GRN	31.08
CWPD1130B-109	PAD,20X24.5,2HOLES,W/BP,TURQSE	31.09
CWPD1130B-110	PAD,20X24.5,2HOLES,W/BP,RASP	31.1
CWPD1130B-111	PAD,20X24.5,2HOLES,W/BP,PLUM	31.11
CWPD1130B-112	PAD,20X24.5,2HOLES,W/BP,REGIMENT	31.12
CWPD1130B-113	PAD,20X24.5,2HOLES,W/BP,SPC BLUE	31.13
CWPD1130B-115	PAD,20X24.5,2HOLES,W/BP,BLK LTHR	31.15
CWPD1130B-116	PAD,20X24.5,2HOLES,W/BP,NVBL LTH	31.16
CWPD1130B-117	PAD,20X24.5,2HOLES,W/BP,PUTTY	31.17
CWPD1130B-118	PAD,20X24.5,2HOLES,W/BP,IMPRL BL	31.18
CWPD1130B-119	PAD,20X24.5,2HOLES,W/BP,YEW GRN	31.19
CWPD1130B-120	PAD,20X24.5,2HOLES,W/BP,DSTY JD	31.2
CWPD1130B-121	PAD,20X24.5,2HOLES,W/BP,TER COT	31.21
CWPD1130B-122	PAD,20X24.5,2HOLES,W/BP,PAPRIKA	31.22
CWPD1130B-123	PAD,20X24.5,2HOLES,W/BP,ASH LTHR	31.23
CWPD1130B-124	PAD,20X24.5,2HLS,W/BP,CERULEAN LTHR	31.24
CWPD1130B-125	PAD,20X24.5,2HLS,W/BP,CHARCOAL LTHR	31.25
CWPD1130B-126	PAD,20X24.5,2HOLES,W/BP,HUNTER LTHR	31.26
CWPD1130B-127	PAD,20X24.5,2HOLES,W/BP,MOSS LTHR	31.27
CWPD1130B-128	PAD,20X24.5,2HOLES,W/BP,SPICE LTHR	31.28
CWPD1130B-129	PAD,20X24.5,2HOLES,W/BP,TOMATO LTHR	31.29
CWPD1303LJ-101	PAD,6X10.75,LEFT,2HLS,BLACK,W/SLIP	32.01
CWPD1303LJ-102	PAD,6X10.75,LEFT,2HLS,RYL BL,W/SLIP	32.02
CWPD1303LJ-103	PAD,6X10.75,LEFT,2HLS,DVE GRY,W/SLI	32.03
CWPD1303LJ-104	PAD,6X10.75,LEFT,2HLS,CROCUS,W/SLIP	32.04
CWPD1303LJ-105	PAD,6X10.75,LEFT,2HLS,GROTTO,W/SLIP	32.05
CWPD1303LJ-106	PAD,6X10.75,LEFT,2HLS,GRAPHITE,W/SL	32.06
CWPD1303LJ-107	PAD,6X10.75,LEFT,2HLS,RED,W/SLIP	32.07
CWPD1303LJ-108	PAD,6X10.75,LEFT,2HLS,CHN GRN,W/SLI	32.08
CWPD1303LJ-109	PAD,6X10.75,LEFT,2HLS,TURQSE,W/SLIP	32.09
CWPD1303LJ-110	PAD,6X10.75,LEFT,2HLS,RASP,W/SLIP	32.1
CWPD1303LJ-111	PAD,6X10.75,LEFT,2HLS,PLUM,W/SLIP	32.11
CWPD1303LJ-112	PAD,6X10.75,LEFT,2HLS,REGIMENT,W/SL	32.12
CWPD1303LJ-113	PAD,6X10.75,LEFT,2HLS,SPC BLUE,W/SL	32.13
CWPD1303LJ-115	PAD,6X10.75,LEFT,2HLS,BLK LTHR,W/SL	32.15
CWPD1303LJ-116	PAD,6X10.75,LEFT,2HLS,NVBL LTH,W/SL	32.16
CWPD1303LJ-117	PAD,6X10.75,LEFT,2HLS,PUTTY,W/SLIP	32.17
CWPD1303LJ-118	PAD,6X10.75,LEFT,2HLS,IMPRL BL,W/SL	32.18

CWPD1303LJ-119	PAD,6X10.75,LEFT,2HLS,YEW GRN,W/SLI	32.19
CWPD1303LJ-120	PAD,6X10.75,LEFT,2HLS,DSTY JD,W/SLI	32.2
CWPD1303LJ-121	PAD,6X10.75,LEFT,2HLS,TER COT,W/SLI	32.21
CWPD1303LJ-122	PAD,6X10.75,LEFT,2HLS,PAPRIKA,W/SLI	32.22
CWPD1303LJ-123	PAD,6X10.75,LEFT,2HLS,ASH LTHR,W/SL	32.23
CWPD1303LJ-124	PAD,6X10.75,LEFT,2HLS,CERULAN LTHR,	32.24
CWPD1303LJ-125	PAD,6X10.75,LEFT,2HLS,CHARCOAL LTHR	32.25
CWPD1303LJ-126	PAD,6X10.75,LEFT,2HLS,HUNTER LTHR,W	32.26
CWPD1303LJ-127	PAD,6X10.75,LEFT,2HLS,MOSS LTHR,W/S	32.27
CWPD1303LJ-128	PAD,6X10.75,LEFT,2HLS,SPICE LTHR,W/	32.28
CWPD1303LJ-129	PAD,6X10.75,LEFT,2HLS,TOMATO LTHR,W	32.29
CWPD1303RJ-101	PAD,6X10.75,RIGHT,2HLS,BLACK,W/SLIP	33.01
CWPD1303RJ-102	PAD,6X10.75,RIGHT,2HLS,RYL BL,W/SLI	33.02
CWPD1303RJ-103	PAD,6X10.75,RIGHT,2HLS,DVE GRY,W/SL	33.03
CWPD1303RJ-104	PAD,6X10.75,RIGHT,2HLS,CROCUS,W/SLI	33.04
CWPD1303RJ-105	PAD,6X10.75,RIGHT,2HLS,GROTTO,W/SLI	33.05
CWPD1303RJ-106	PAD,6X10.75,RIGHT,2HLS,GRAPHITE,W/S	33.06
CWPD1303RJ-107	PAD,6X10.75,RIGHT,2HLS,RED,W/SLIP	33.07
CWPD1303RJ-108	PAD,6X10.75,RIGHT,2HLS,CHN GRN,W/SL	33.08
CWPD1303RJ-109	PAD,6X10.75,RIGHT,2HLS,TURQSE,W/SLI	33.09
CWPD1303RJ-110	PAD,6X10.75,RIGHT,2HLS,RASP,W/SLIP	33.1
CWPD1303RJ-111	PAD,6X10.75,RIGHT,2HLS,PLUM,W/SLIP	33.11
CWPD1303RJ-112	PAD,6X10.75,RIGHT,2HLS,REGIMENT,W/S	33.12
CWPD1303RJ-113	PAD,6X10.75,RIGHT,2HLS,SPC BLUE,W/S	33.13
CWPD1303RJ-115	PAD,6X10.75,RIGHT,2HLS,BLK LTHR,W/S	33.15
CWPD1303RJ-116	PAD,6X10.75,RIGHT,2HLS,NVBL LTH,W/S	33.16
CWPD1303RJ-117	PAD,6X10.75,RIGHT,2HLS,PUTTY,W/SLIP	33.17
CWPD1303RJ-118	PAD,6X10.75,RIGHT,2HLS,IMPRL BL,W/S	33.18
CWPD1303RJ-119	PAD,6X10.75,RIGHT,2HLS,YEW GRN,W/SL	33.19
CWPD1303RJ-120	PAD,6X10.75,RIGHT,2HLS,DSTY JD,W/SL	33.2
CWPD1303RJ-121	PAD,6X10.75,RIGHT,2HLS,TER COT,W/SL	33.21
CWPD1303RJ-122	PAD,6X10.75,RIGHT,2HLS,PAPRIKA,W/SL	33.22
CWPD1303RJ-123	PAD,6X10.75,RIGHT,2HLS,ASH LTHR,W/S	33.23
CWPD1303RJ-124	PAD,6X10.75,RIGHT,2HLS,CERULAN LTHR	33.24
CWPD1303RJ-125	PAD,6X10.75,RIGHT,2HLS,CHARCOAL LTH	33.25
CWPD1303RJ-126	PAD,6X10.75,RIGHT,2HLS,HUNTER LTHR,	33.26
CWPD1303RJ-127	PAD,6X10.75,RIGHT,2HLS,MOSS LTHR,W/	33.27
CWPD1303RJ-128	PAD,6X10.75,RIGHT,2HLS,SPICE LTHR,W	33.28
CWPD1303RJ-129	PAD,6X10.75,RIGHT,2HLS,TOMATO LTHR,	33.29
CWPF1016-731	BAR,,FLAT CR/HR, 3/8 X 2 X 8 1/4, 3	34
CW30119-400	WEIGHT STACK,400 LBS,LTP-S,19 X 20L	35
CWKADLN050-081	NUT, ACORN, 1/2-13	36
CWKAYN031-025	LOCKNUT, NYLON INSERT, HALF, UNC,	37
CWTAYN031-100	SCREW, BUTTON HEAD, BLK XYLAN, 5/1	38
CWTAYN031-150	SCREW, BUTTON HEAD, BLK XYLAN,5/16	39
CWTAYN050-100	SCREW, BUTTON HEAD, BLK XYLAN, 1/2	40
CWEANN031-031	SCREW, SET, SCKT, CUP POINT, 5/16-1	41
CWBFNN050-250	STUD, 1/2-13 X 2 1/2	42
CWWBKN031-007	WASHER, FLAT, TYPE A, SAE, 5/16 ID	43
CWWALYN031-008	WASHER, SPLIT, 5/16 ID, BL	44
CWWALYN050-013	WASHER, SPLIT, 1/2 ID, BLK XYLAN	45
CW30010-101	LABEL,WARNING STRENGTH	46

CW30050-101	LABEL,INSTRUCTION,612	47
CW31759-101	LABEL,SMALL PRECOR USA ICARIAN LINE	48
CW10520-721	ASSY, PLATE, WEIGHT, 20 LBS, WRKL B	202
CWAC1133-101	BUSHING, WEIGHT PLATE, LDPE PLASTIC	203
CWLDNN038-200	PIN, ROLL, DIA 3/8 X 2	250
CW30184-901	ASSY,BARREL,TOP PLATE,ALUMINUM	251
CW10570-721	PLATE, WEIGHT, LARGE TOP (LTP-S),	285
CW10570-722	PLATE, WEIGHT, LARGE TOP (LTP-S),	285
CW30132-711	SELECTOR STEM, 20 PLATE,0 .875 DIA,	308
CW30011-101	LABEL,WARNING WEIGHT STACK	311
CW12401-114	LABEL, WEIGHT PLATE, 40 LBS/ 18.2 K	327
CW12401-120	LABEL, WEIGHT PLATE, 60 LBS/ 27.3 K	333
CW12401-124	LABEL, WEIGHT PLATE, 80 LBS/ 36.4 K	337
CW12401-128	LABEL, WEIGHT PLATE, 100 LBS/ 45.5	341
CW12401-130	LABEL, WEIGHT PLATE, 120 LBS/ 54.6	343
CW12401-132	LABEL, WEIGHT PLATE, 140 LBS/ 63.6	345
CW12401-134	LABEL, WEIGHT PLATE, 160 LBS/ 72.7	347
CW12401-136	LABEL, WEIGHT PLATE, 180 LBS/ 81.8	349
CW12401-138	LABEL, WEIGHT PLATE, 200 LBS/ 90.9	351
CW12401-140	LABEL, WEIGHT PLATE, 220 LBS/ 100 K	353
CW12401-142	LABEL, WEIGHT PLATE, 240 LBS/ 109.1	355
CW12401-144	LABEL, WEIGHT PLATE, 260 LBS/ 118.2	357
CW12401-145	LABEL, WEIGHT PLATE, 280 LBS/ 127.3	358
CW12401-146	LABEL, WEIGHT PLATE, 300 LBS/ 136.4	359
CW12401-147	LABEL, WEIGHT PLATE, 320 LBS/ 145.5	360
CW12401-148	LABEL, WEIGHT PLATE, 340 LBS/ 154.5	361
CW12401-149	LABEL, WEIGHT PLATE, 360 LBS/ 163.6	362
CW12401-150	LABEL, WEIGHT PLATE, 380 LBS/ 172.7	363
CW12401-151	LABEL, WEIGHT PLATE, 400 LBS/ 181.8	364
CWAC1178-101	FLOOR PROTECTOR, RUBBER, 2.563 X 6.	501
CWAC1179-101	FLOOR PROTECTOR, RUBBER, 4.813 X 2.	502